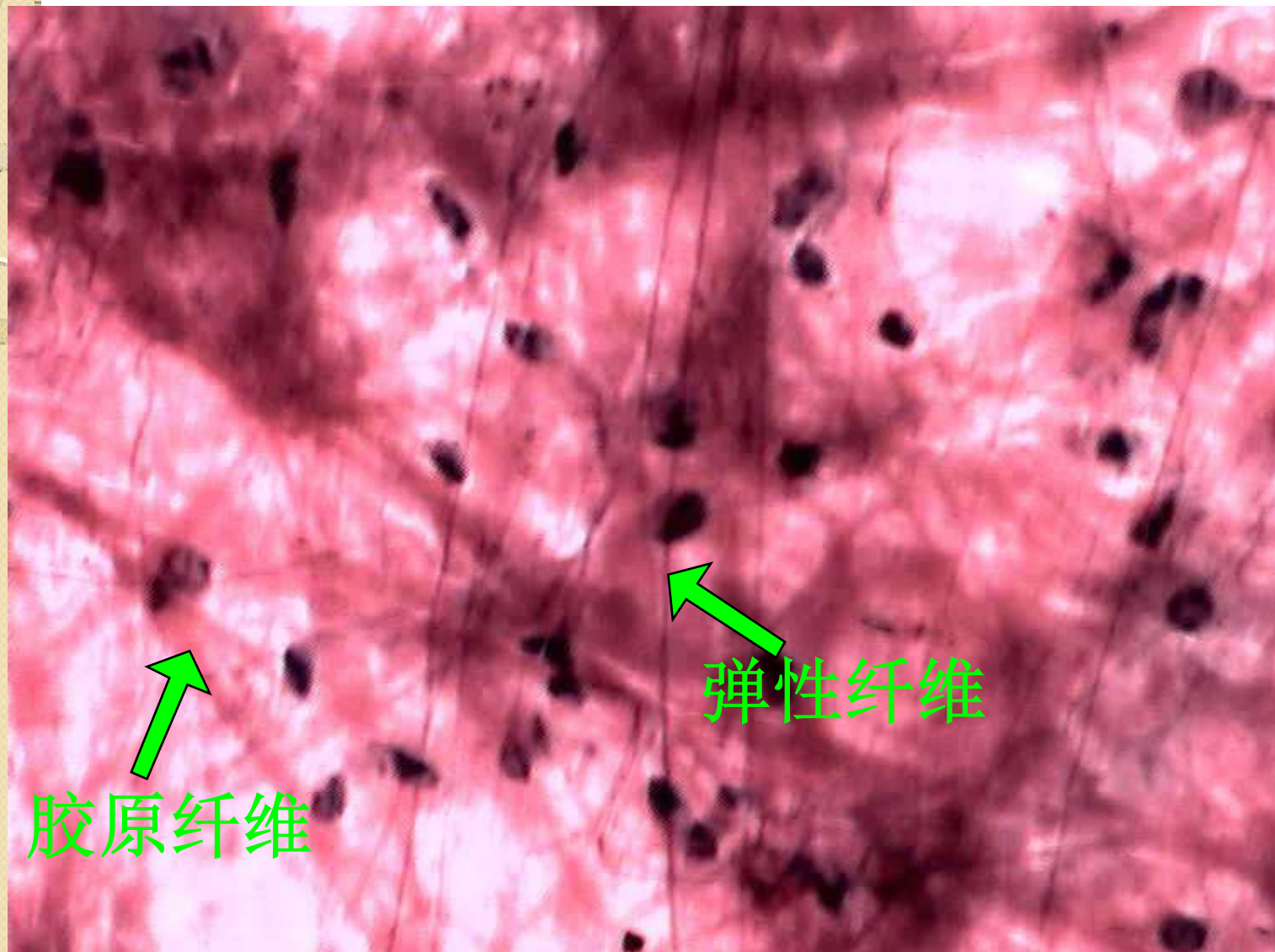
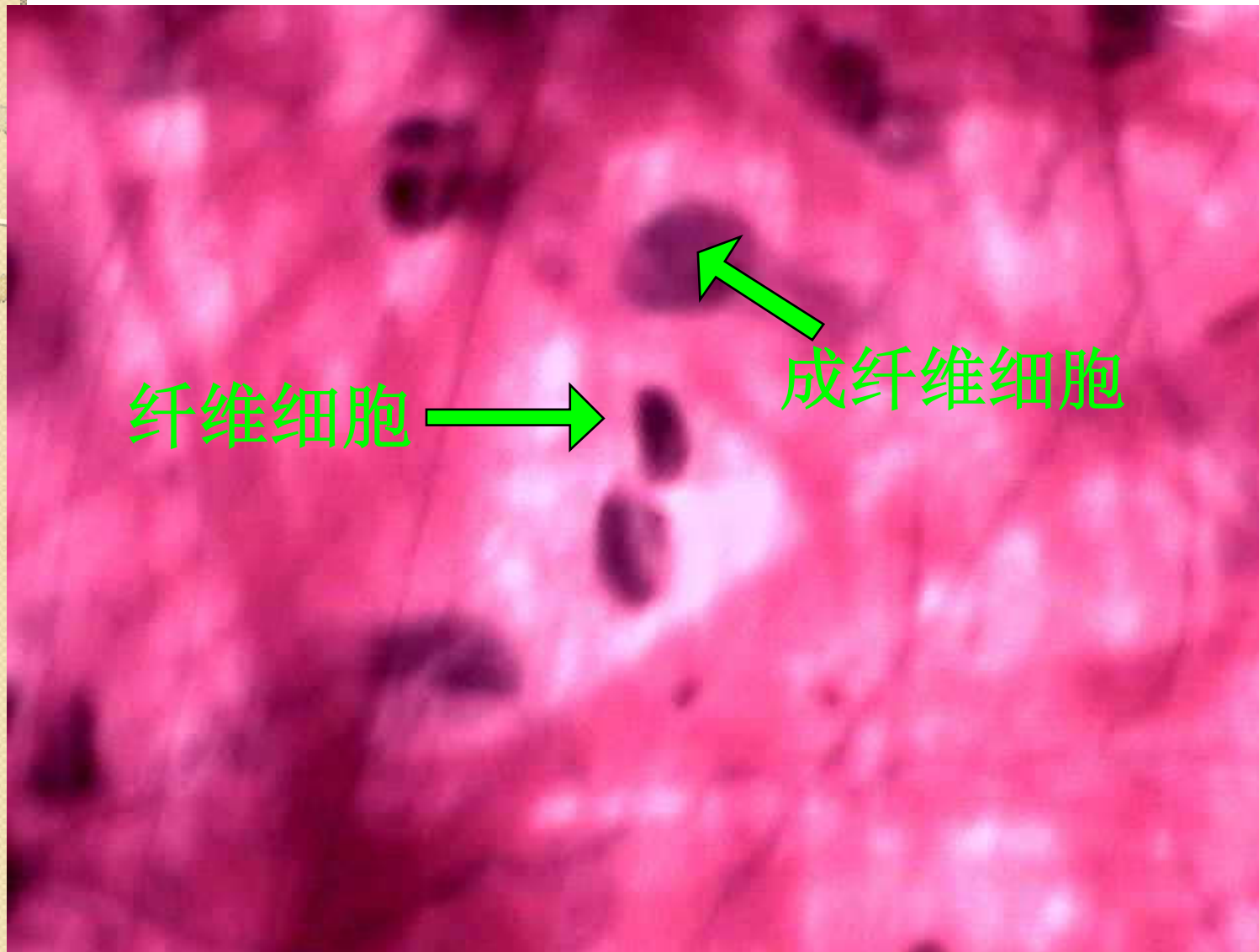


2.1 疏松结缔组织

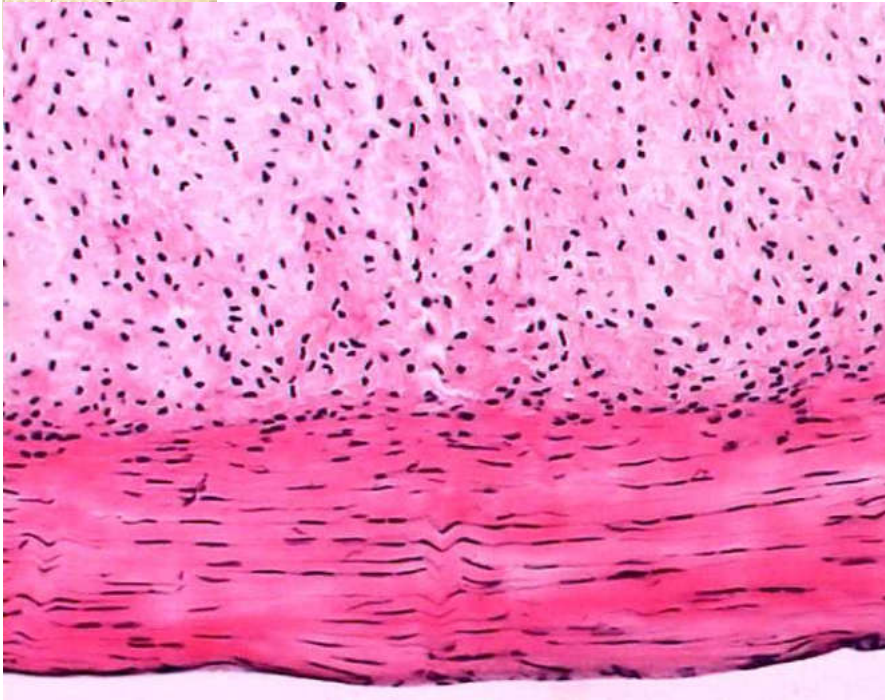


2.1 疏松结缔组织 (20 ×)

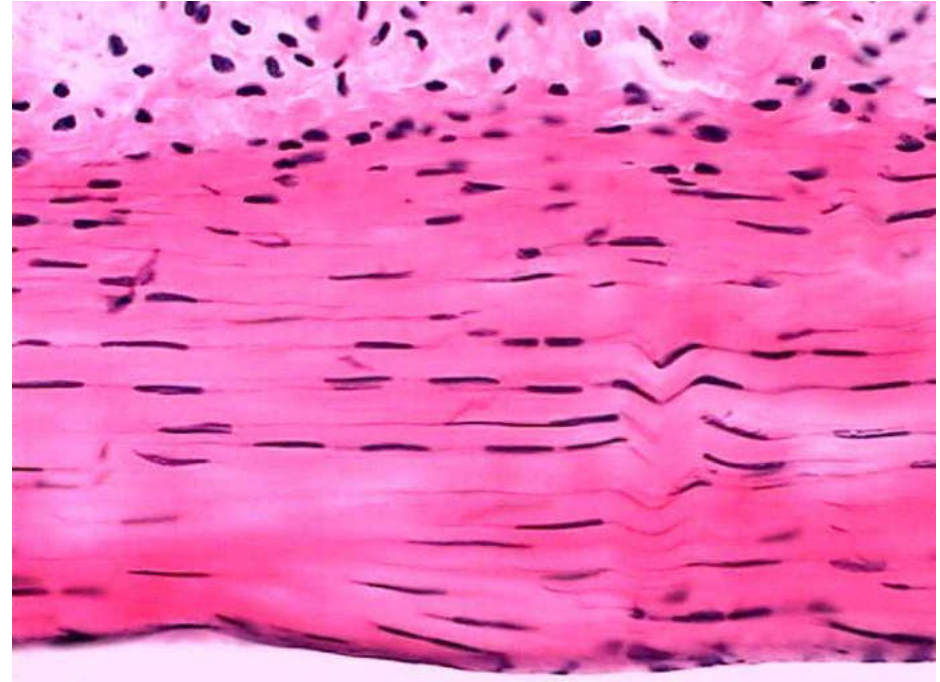


2.1 疏松结缔组织 (40×)

这是 ? 组织

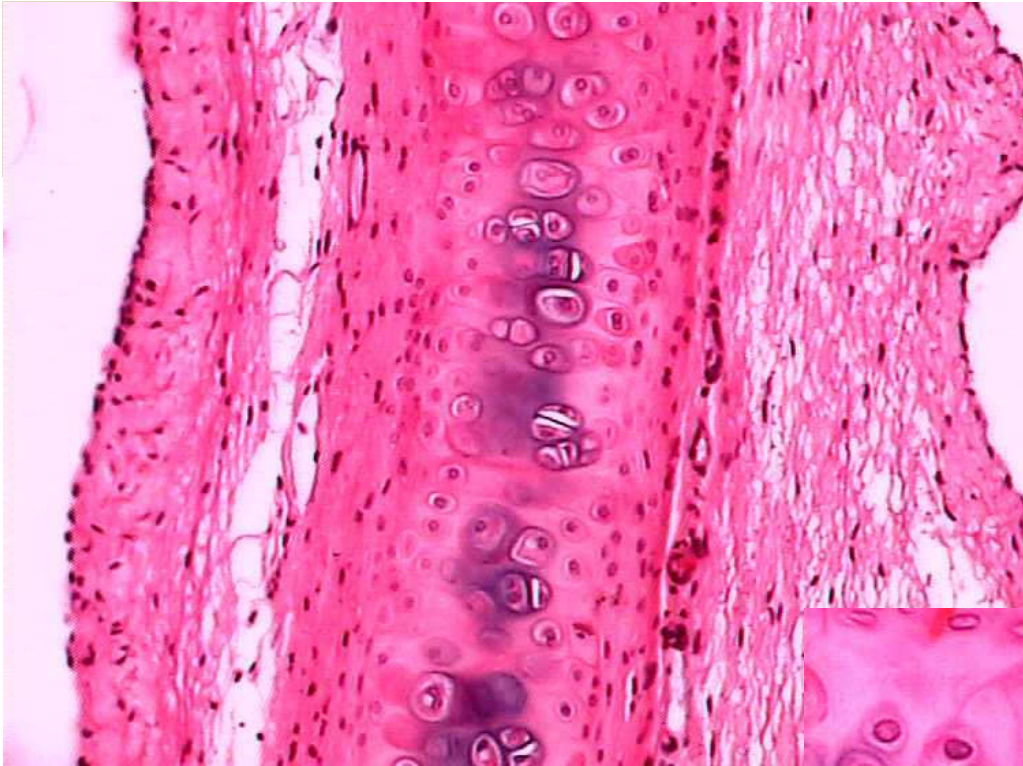


肌腱(10×)



肌腱(20×)

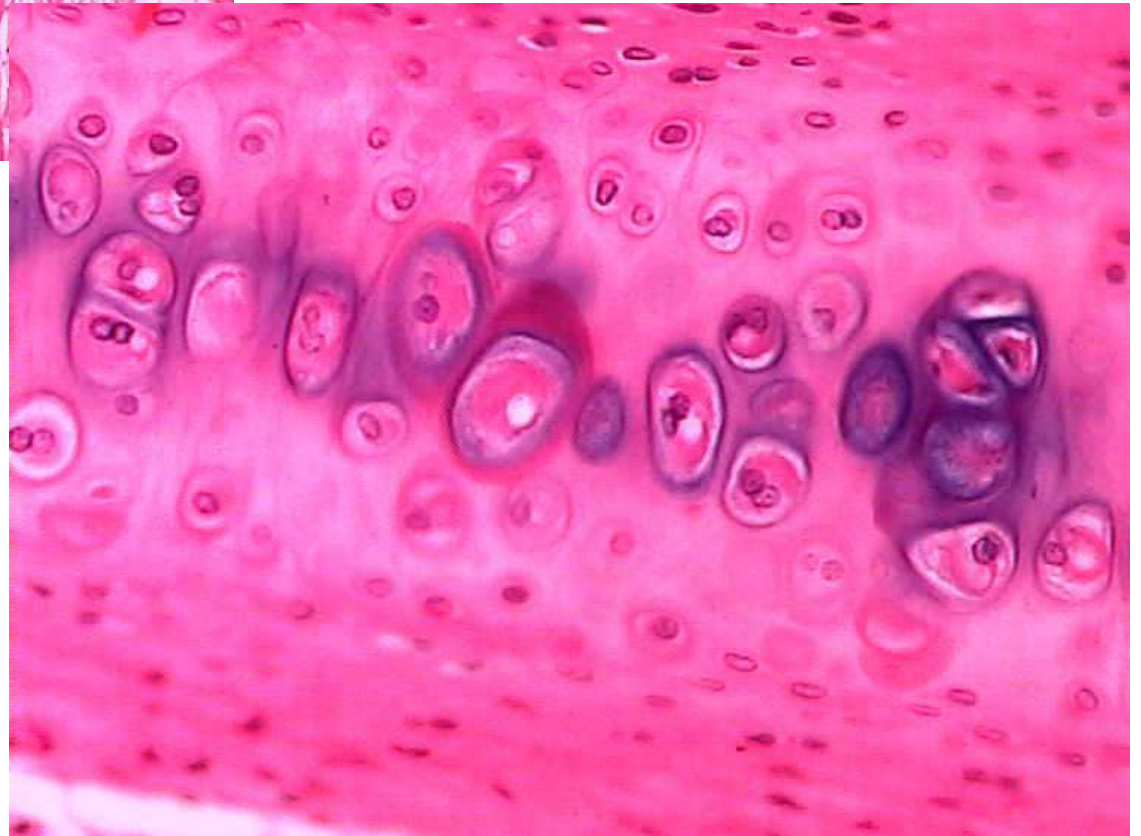
2.2 致密结缔组织 (40×) 又如: 头骨缝
牛膈-结缔组织
肌表面膜-咬不动-弹性纤维
猪脚筋? 胶原纤维

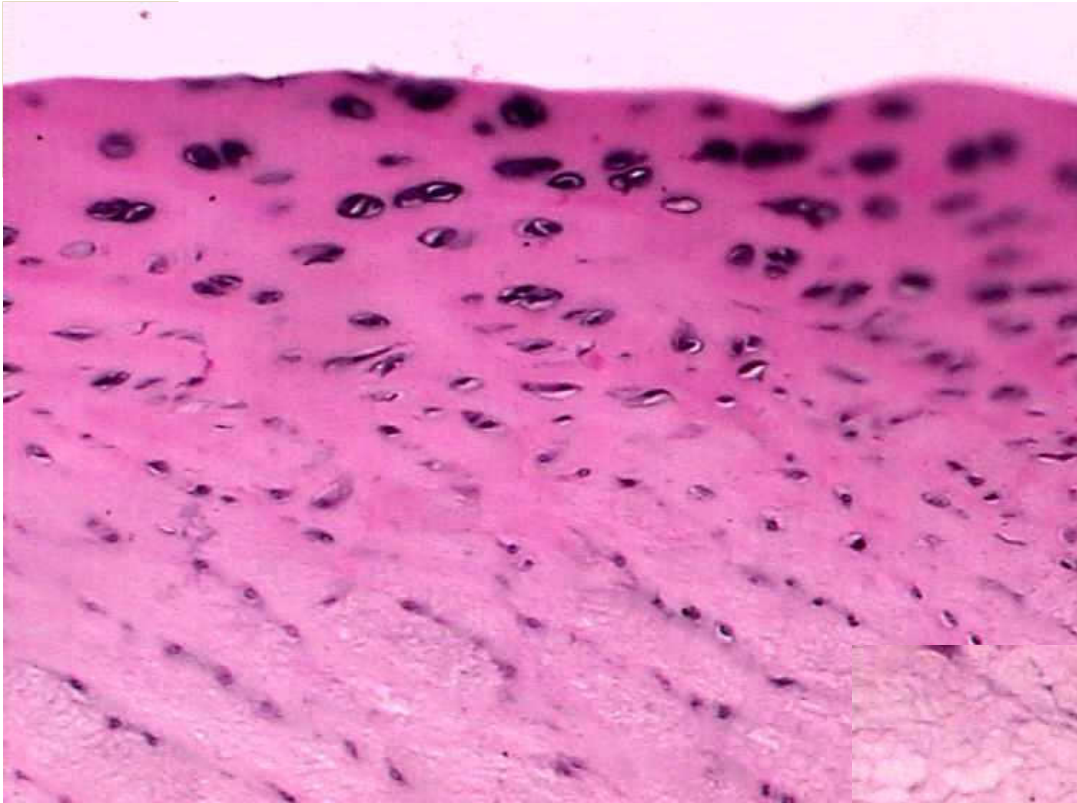


这是？组织

2.3 透明软骨 (20×)

透明软骨 (10×)

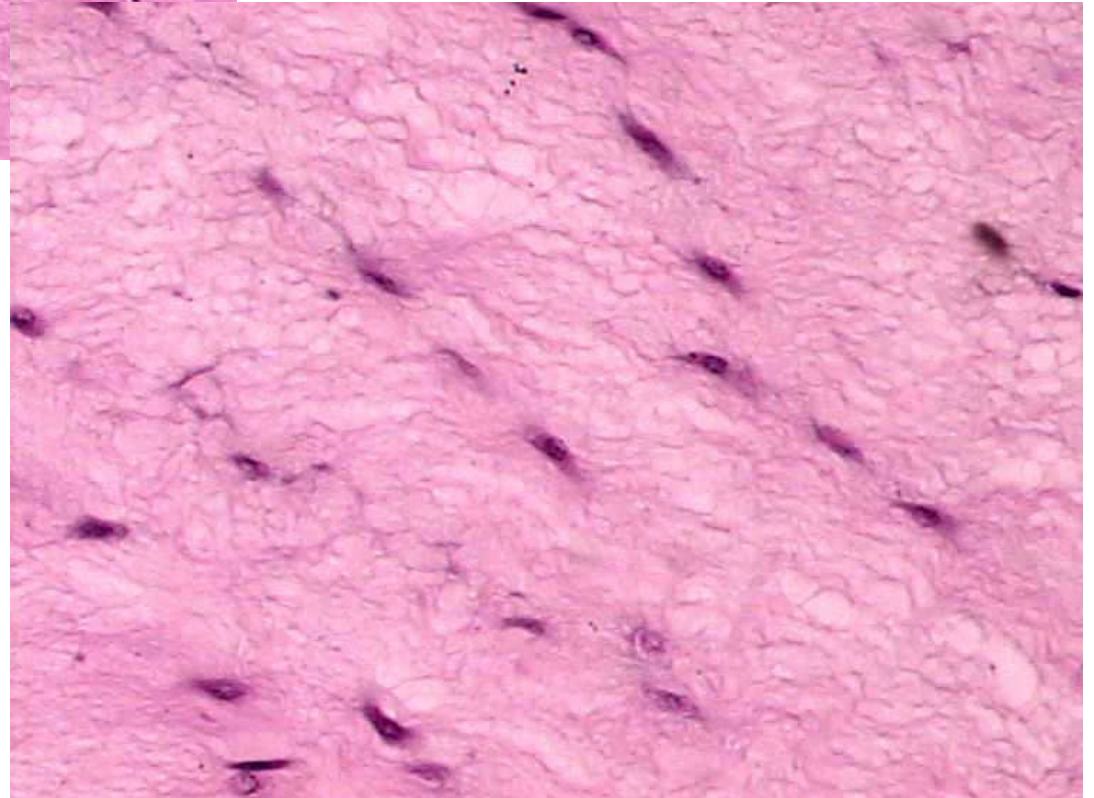


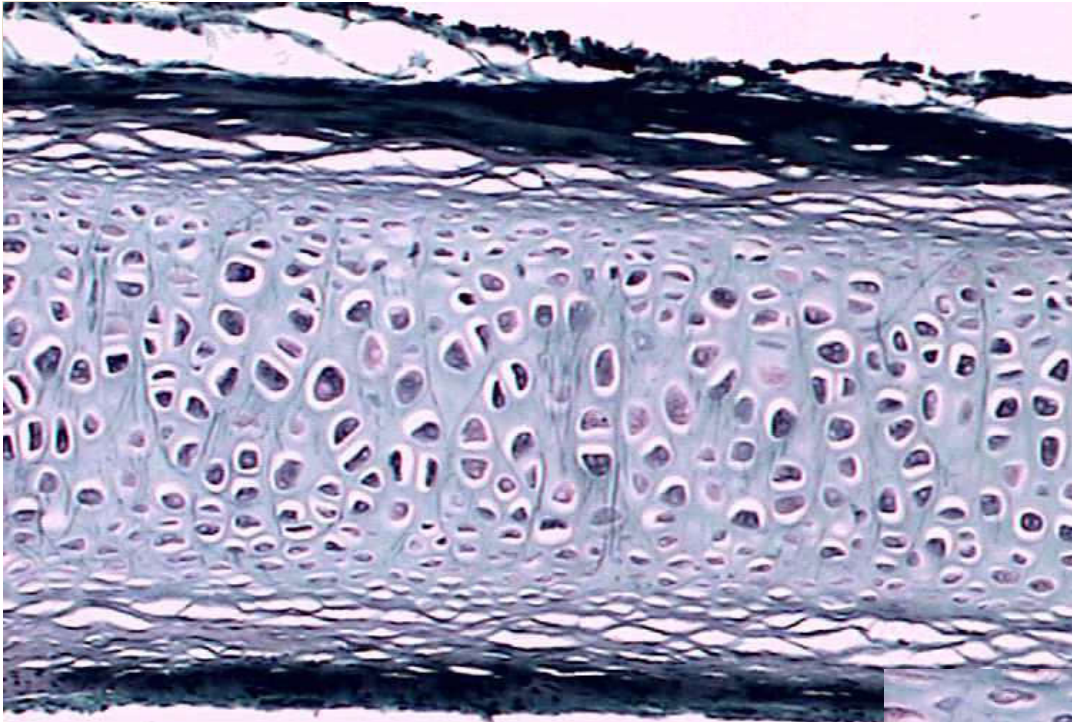


? 组织

纤维软骨 (20×)

纤维软骨 (10×)

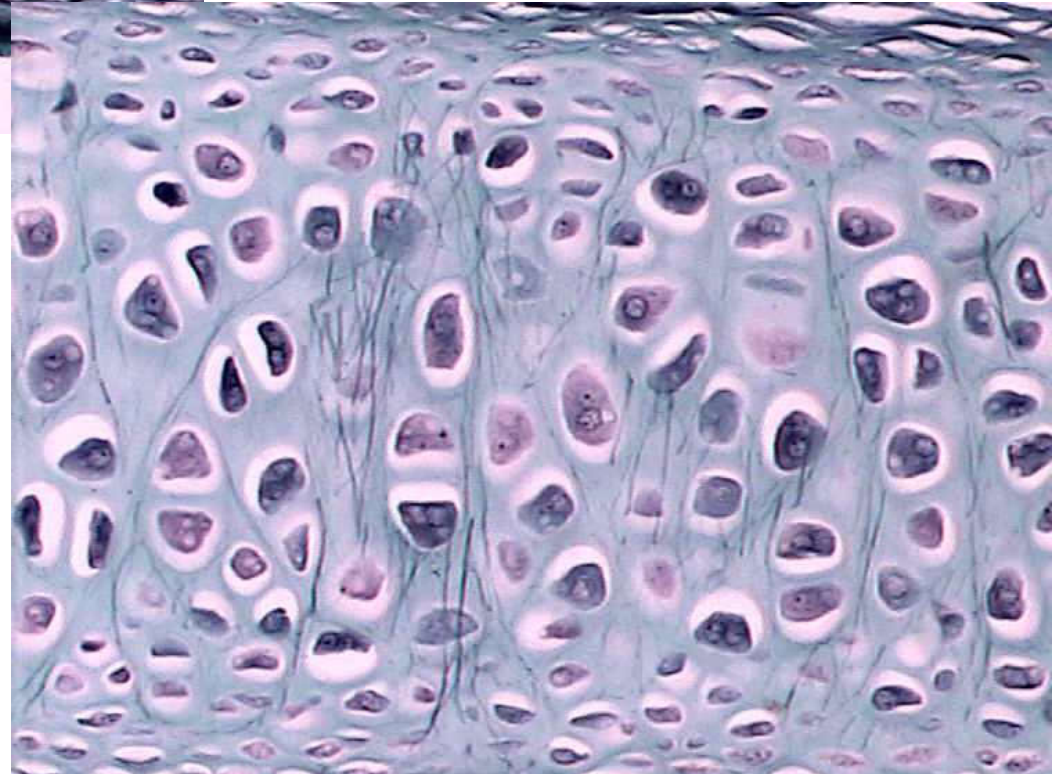


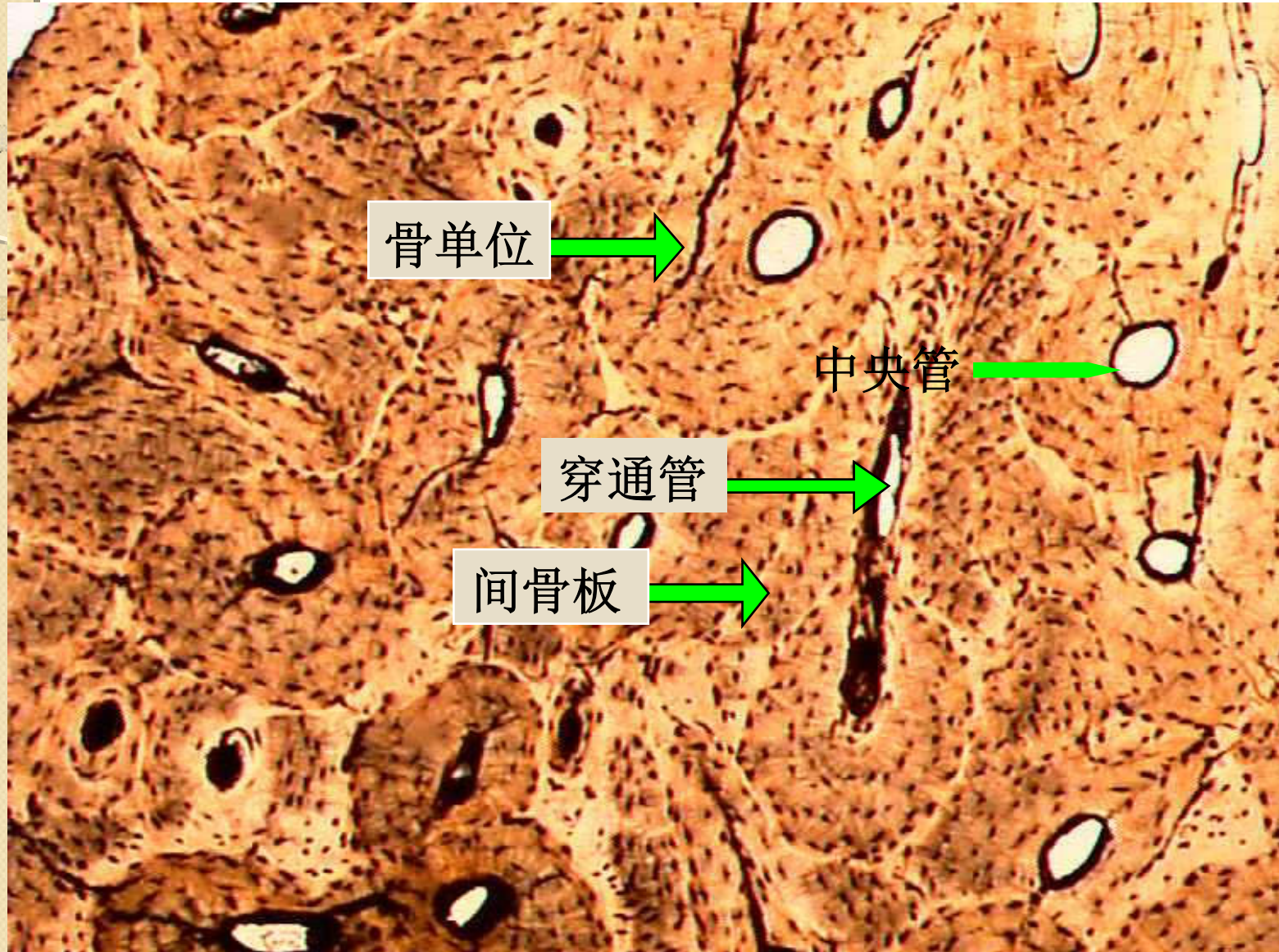


? 组织

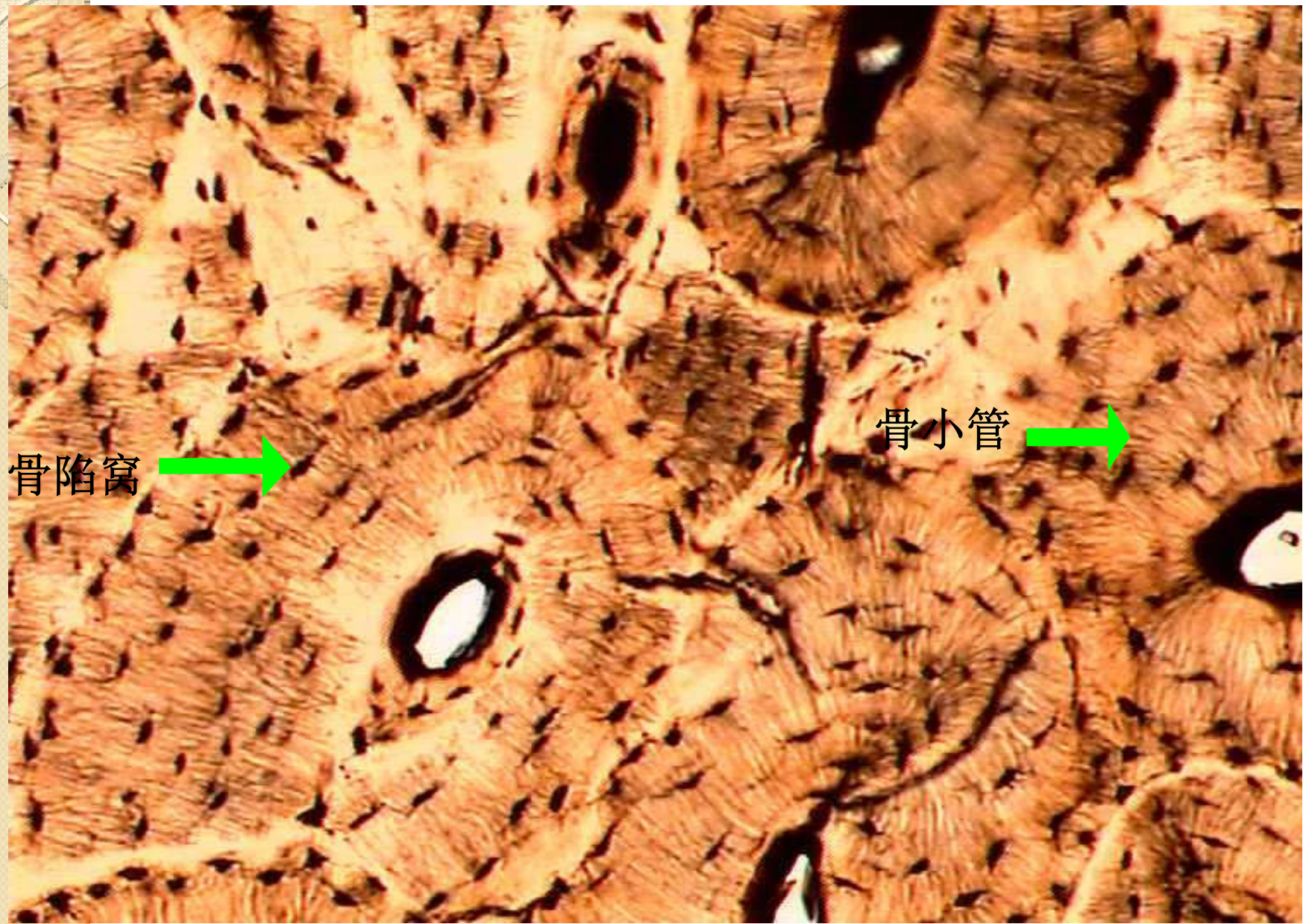
弹性软骨 (20×)

弹性软骨 (10×)

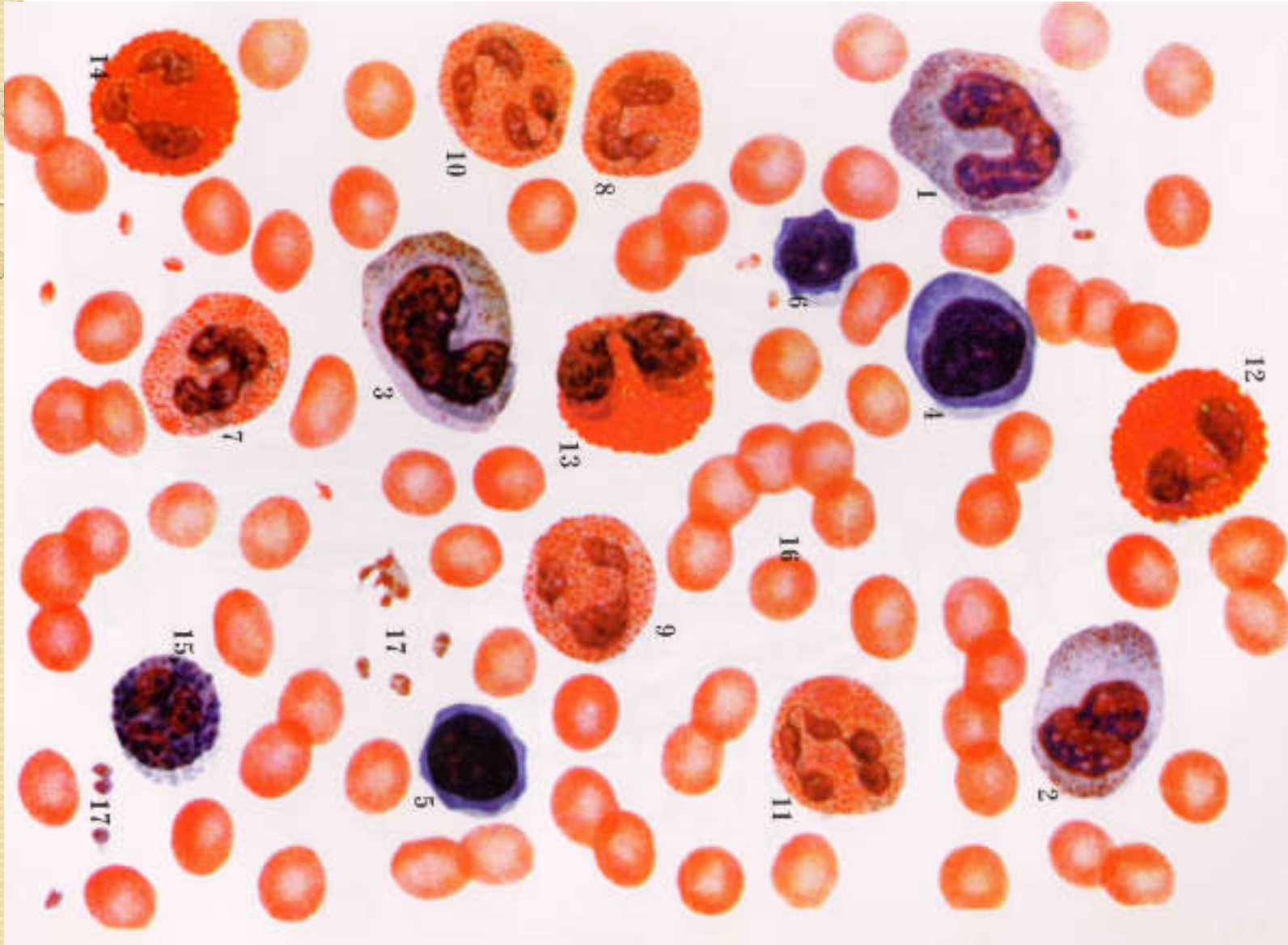




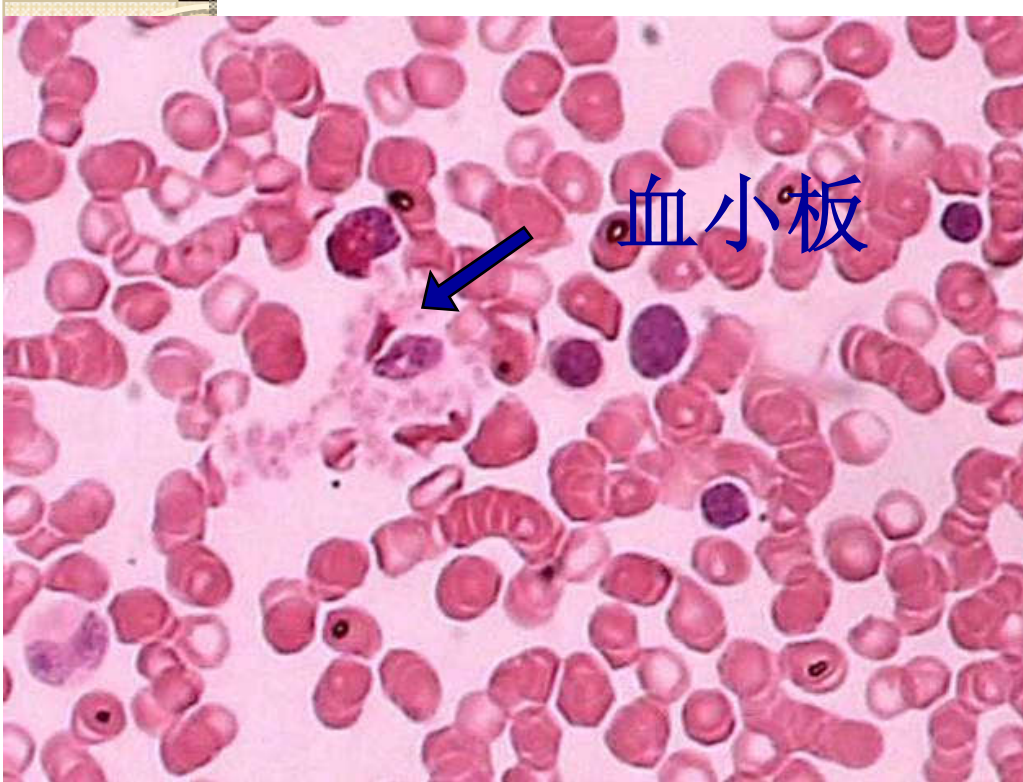
2.4 骨磨片 (4×)

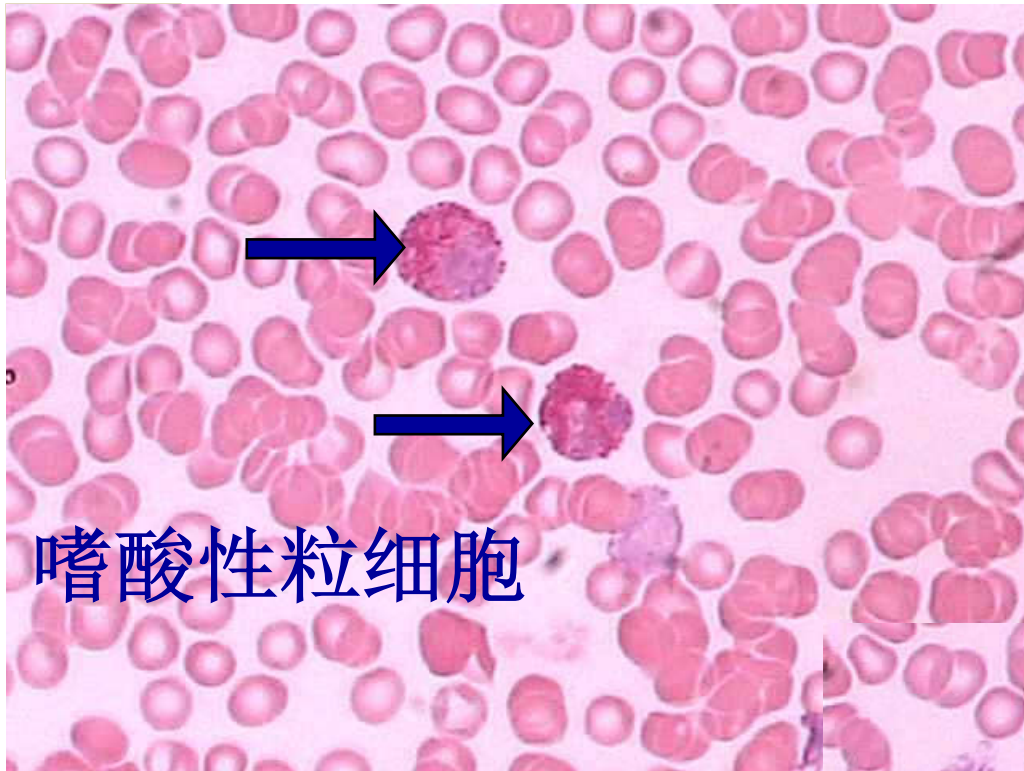


骨磨片 (10×)

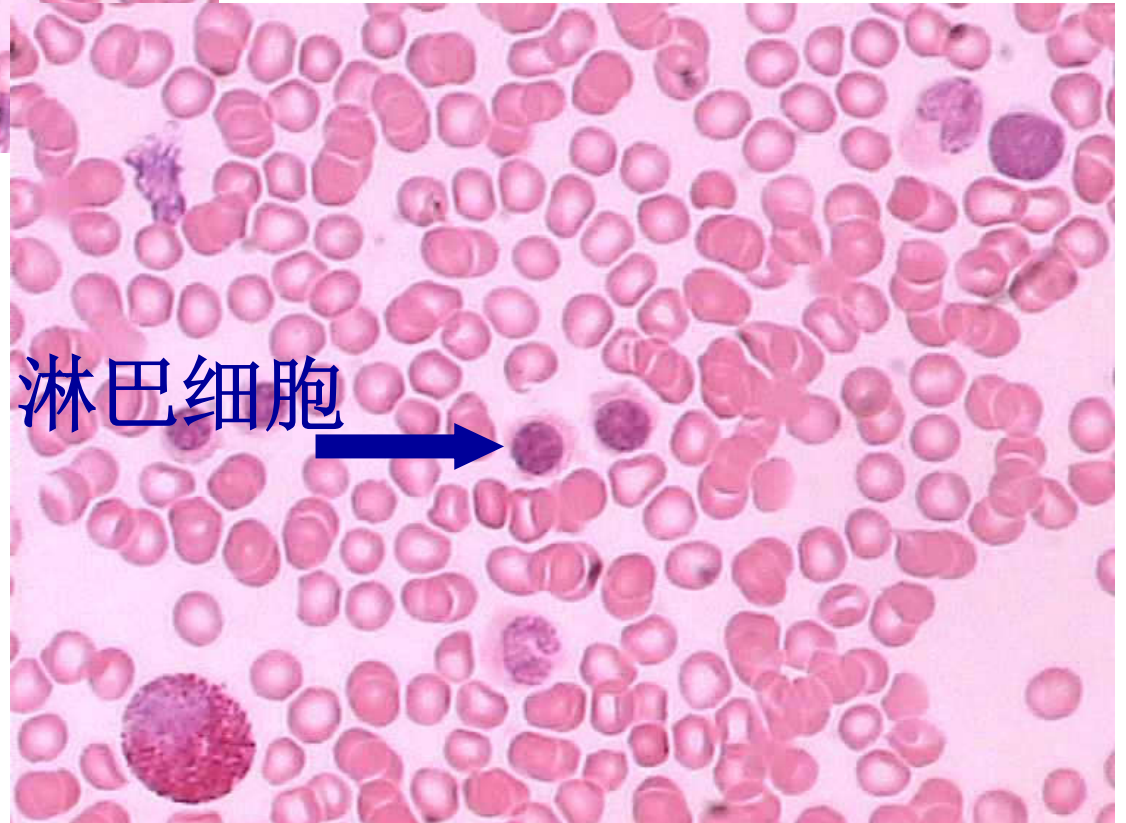


血细胞图光镜模式





嗜酸性粒细胞



淋巴细胞

三、示教内容

浆细胞 骨单位骨板 同源细胞群

四、课后小结

- 1、比较假复层柱状纤毛上皮和复层扁平上皮的**结构特点**。**分布和功能**。
- 2、疏松结缔组织的**细胞成分和功能**。
- 3、长骨的**显微结构**。



五、作业

1、名词解释（选做）

内皮和间皮 浆细胞 骨单位 缝隙连接

2、绘光镜下显微结构图（必做）

- 假复层纤毛上皮
- 疏松结缔组织
- 骨组织